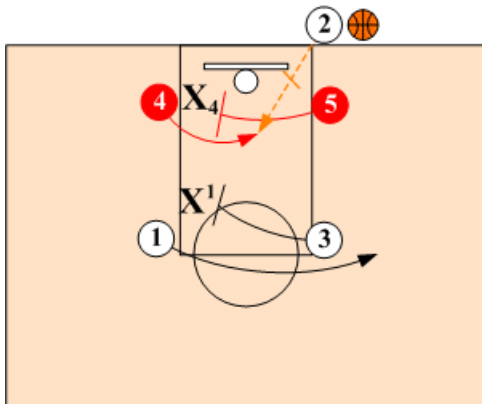


Box Alignment - "Base Screen & Roll"

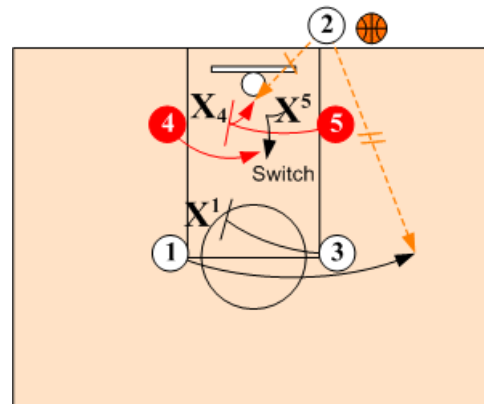
This baseline out of bounds play is designed primarily for a quick hitting baseline screen and roll. Although, this is a fairly simple play depending on execution, it has been proven to be one of the most success plays over the years.

Primary "Go To" Player: #4 Power Forward
Secondary "Go To" Player: #5 Post

Right Side Entry

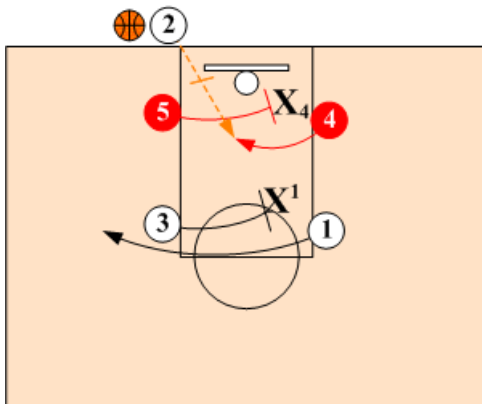


Inbounds Pass: From the box alignment, O5 sets a baseline screen for O4. O4 goes over the top of O5's screen looking for a lob feed from inbounder O2. Out front O3 screens for O1.

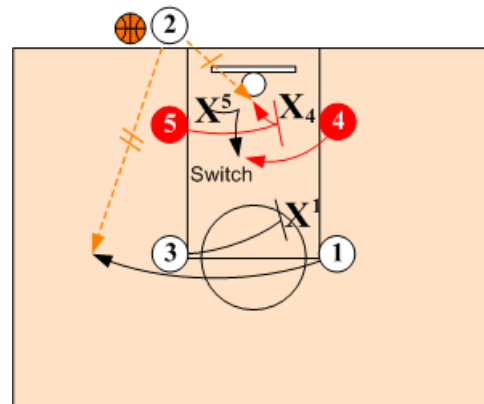


Screen & Roll Option: If/when the defense switches, O2 looks to feed O5. When O2 cannot inbound the ball to either O4 or O5, O2 looks to make the inbounds pass to O1 who initiates a predetermined continuity action.

Left Side Entry



Inbounds Pass: From the box alignment, O5 sets a baseline screen for O4. O4 goes over the top of O5's screen looking for a lob feed from inbounder O2. Out front O3 screens for O1.



Screen & Roll Option: If/when the defense switches, O2 looks to feed O5. When O2 cannot inbound the ball to either O4 or O5, O2 looks to make the inbounds pass to O1 who initiates a predetermined continuity action.